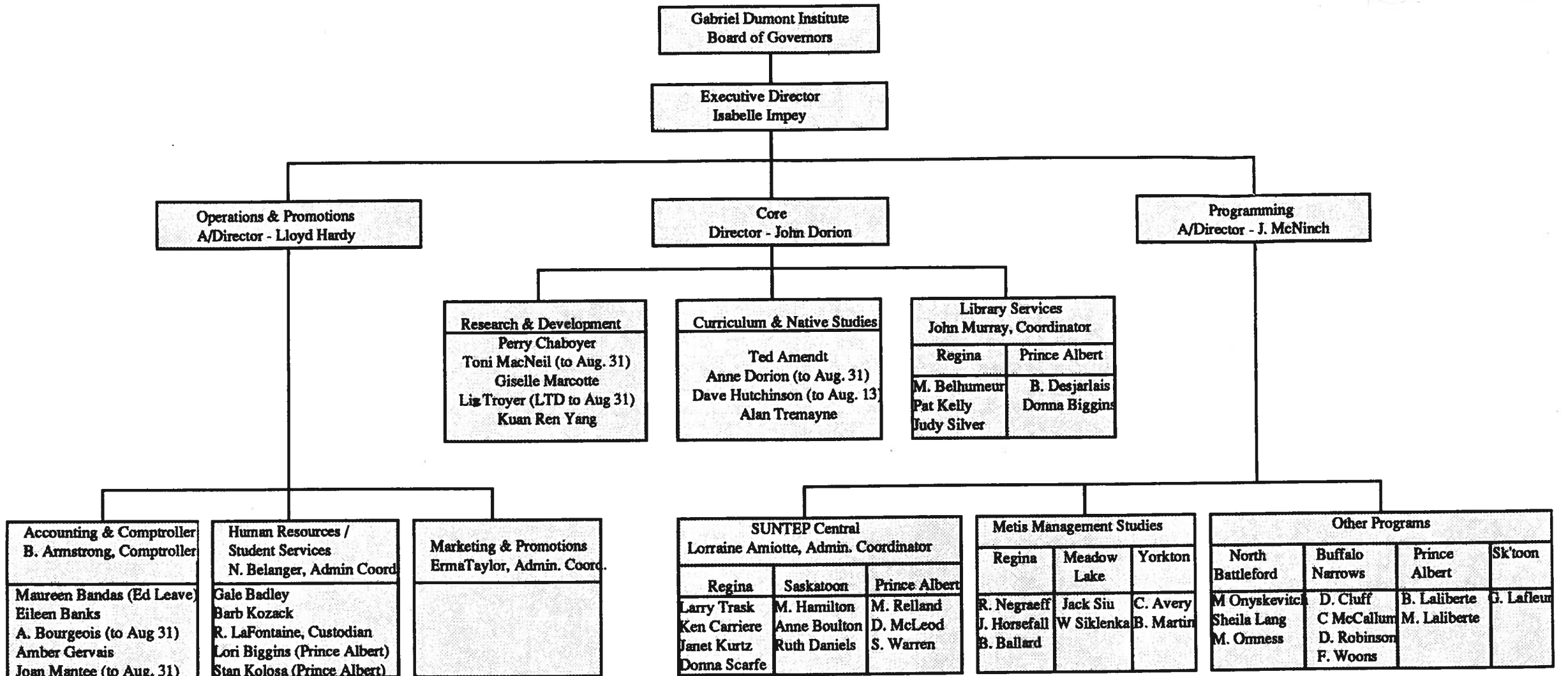


Gabriel Dumont Institute Organizational Chart

AUG 13 1993



Accounting & Comptroller B. Armstrong, Comptroller
Maureen Bandas (Ed Leave) Eileen Banks A. Bourgeois (to Aug 31) Amber Gervais Joan Mantee (to Aug. 31)

Human Resources / Student Services N. Belanger, Admin Coord
Gale Badley Barb Kozack R. LaFontaine, Custodian Lori Biggins (Prince Albert) Stan Kolosa (Prince Albert)

Marketing & Promotions Erna Taylor, Admin. Coord.

Research & Development Perry Chaboyer Toni MacNeil (to Aug. 31) Giselle Marcotte Liz Troyer (LTD to Aug 31) Kuan Ren Yang

Curriculum & Native Studies Ted Amendt Anne Dorion (to Aug. 31) Dave Hutchinson (to Aug. 13) Alan Tremayne

Library Services John Murray, Coordinator	
Regina	Prince Albert
M. Belhumeur Pat Kelly Judy Silver	B. Desjarlais Donna Biggins

SUNTEP Central Lorraine Amiotte, Admin. Coordinator		
Regina	Saskatoon	Prince Albert
Larry Trask Ken Carriere Janet Kurtz Donna Scarfe	M. Hamilton Anne Boulton Ruth Daniels	M. Relland D. McLeod S. Warren

Metis Management Studies		
Regina	Meadow Lake	Yorkton
R. Negraeff J. Horsefall B. Ballard	Jack Siu W Siklenka	C. Avery B. Martin

Other Programs			
North Battleford	Buffalo Narrows	Prince Albert	Sk'toon
M Onyskevitch Sheila Lang M. Omness	D. Cluff C McCallum D. Robinson F. Woons	B. Laliberte M. Laliberte	G. Lafleur